



MONTHLY MEMBERSHIP PROGRESS REPORT

District 26 M6

Results as of: 10/31/2017

GMT: JOE AL PICONE

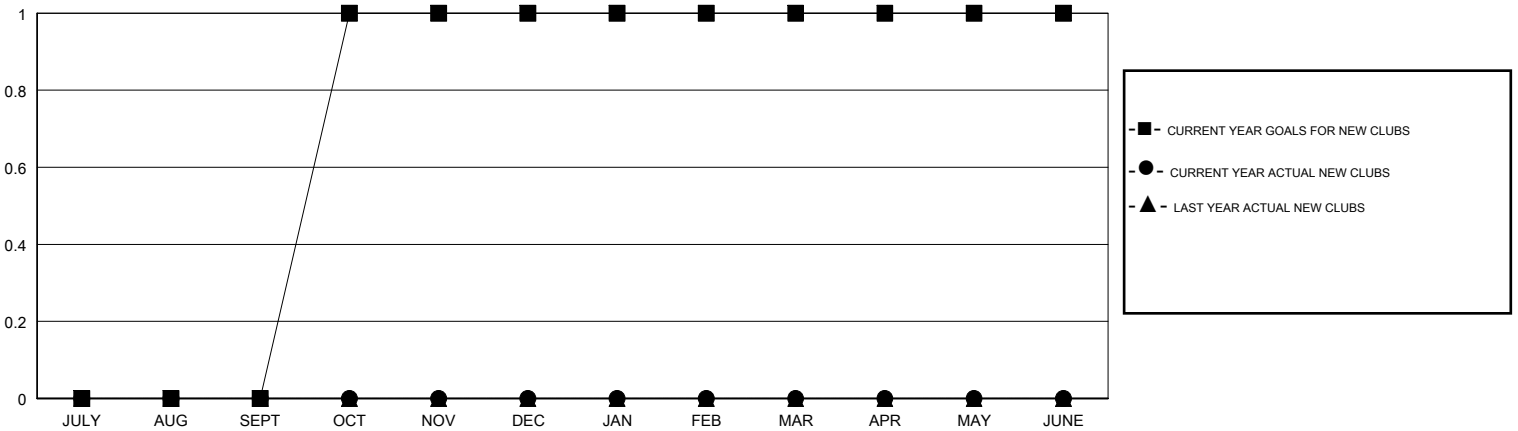
LOCATION MISSOURI

GMT CA

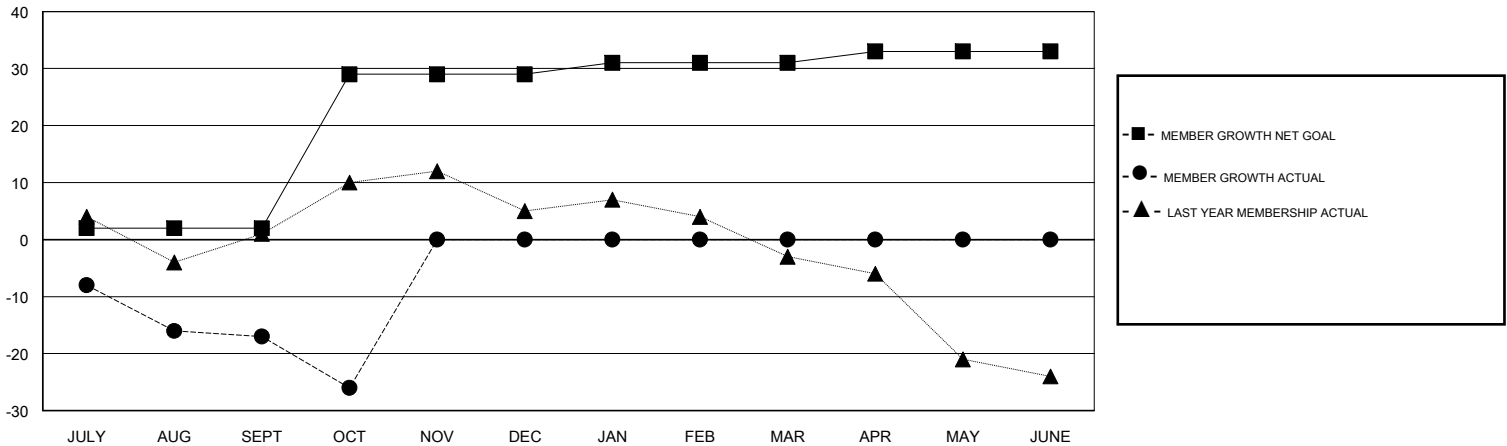
Clubs			
RESULTS FOR 2017-2018			
QUARTER	NEW CLUB GOAL	NEW CLUBS	DROPPED CLUBS
JULY/AUG/SEPT	0	0	0
OCT/NOV/DEC	1	0	0
JAN/FEB/MAR	0	0	0
APR/MAY/JUNE	0	0	0

Members			
RESULTS FOR 2017-2018			
QUARTER	MEMBER GROWTH NET GOAL	MEMBER GROWTH ACTUAL	DROPPED MEMBERS ACTUAL (including transfers)
JULY/AUG/SEPT	2	16	30
OCT/NOV/DEC	27	2	11
JAN/FEB/MAR	2	0	0
APR/MAY/JUNE	2	0	0

GOALS AND ACTUAL NEW CLUBS CUMULATIVE



GOALS AND ACTUAL MEMBERS CUMULATIVE



DROPPED CLUBS: 0

9 CLUBS OF 46 ADDED 1 OR MORE NEW MEMBERS

GENDER DISTRIBUTION	
MALE	753 (69.08%)
FEMALE	337 (30.92%)
Women Percentage Fiscal Year Goal: 44%	

DROPPED MEMBERS	
DECEASED	2
CLUB CANCELLED	0
OTHER	39
TOTAL	41

[CLICK HERE FOR CUMULATIVE MEMBERSHIP DATA](#)

TOTAL FAMILY UNIT MEMBERS	240
FAMILY MEMBERS PAYING HALF DUES	121